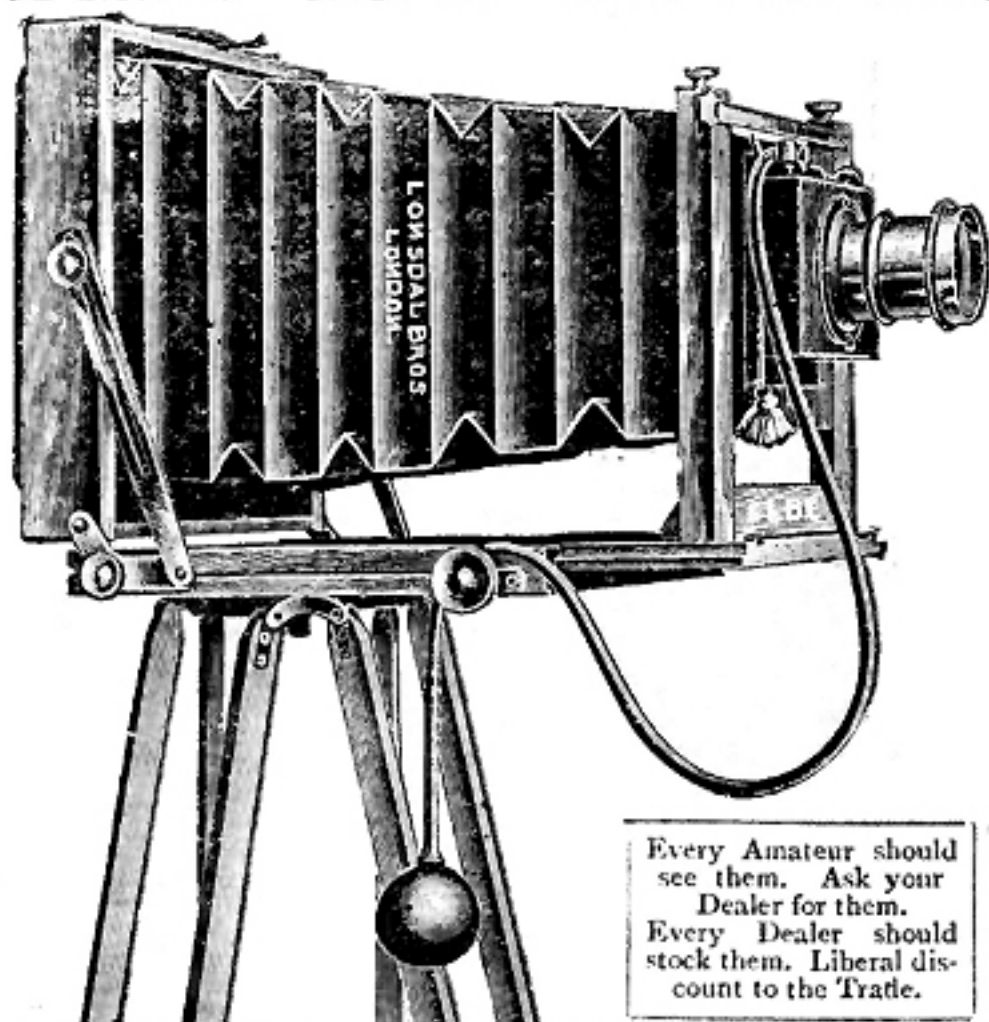


## CAMERA MAKING OF TO-DAY

## THE 'L.B.' OUTFIT.

Lonsdale's Cameras are Practical Cameras.



Lonsdale's Cameras are Practical Cameras.

Every Amateur should see them. Ask your Dealer for them. Every Dealer should stock them. Liberal discount to the Trade.

HALF-PLATE SET, £4 4s. NET. | WHOLE-PLATE SET, £6 6s. NET.

Extra Slides—Half-plate, 10s.; Whole-plate, 14s. 6d. each.

Camera and One Book Form Slide. R.R. Instantaneous Iris Lens. Thornton-Pickard Pattern Shutter. Polished Ash Tripod Stand.

Everything well made, well designed, and well finished.

- 1.—THE CAMERA has Short Focus Movement, Leather Bellows, and all modern adjustments. An aperture in the baseboard allows the camera to close without removing shutter or lens.
- 2.—THE DARK SLIDE has flexible hinged shutters and automatic lock springs.
- 3.—THE SHUTTER is adjustable for speeds varying from  $\frac{1}{15}$  to  $\frac{1}{50}$  second.
- 4.—THE LENS is guaranteed achromatic and is of specially high quality, working at  $f/8$ .
- 5.—THE TRIPOD is extremely rigid and compact, no loose parts, and is quickly set up.
- 6.—THE WOODWORK is of selected Honduras Mahogany, well polished, and the brass fittings hand finished and well lacquered.

CHEAPER SETS, Similar Design:—

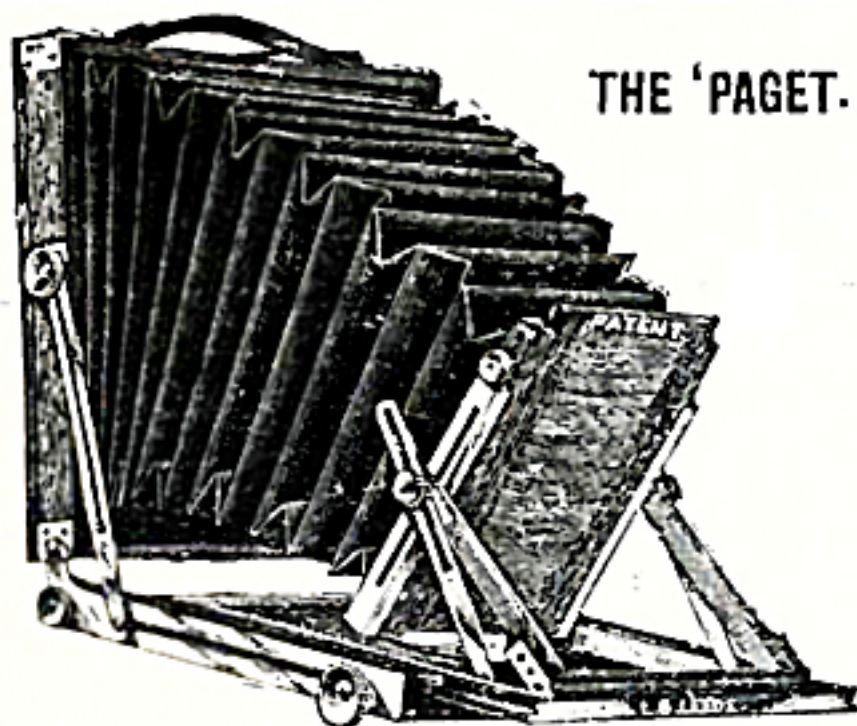
$\frac{1}{2}$ -pl., £3 10s.; Whole pl., £5 10s. Extra Slides, Half-pl., 9s.; Whole pl., 13s. 6d. each.

LONSDALE BROS., 22 Goswell Road, London, E.C.

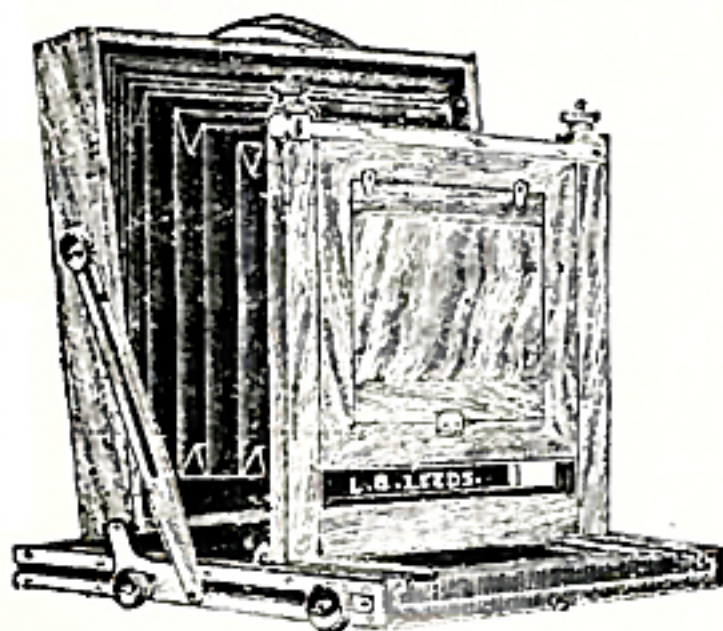
Photographic Engineers and Wholesale Camera Manufacturers.

Publishers of the 'Cyclopedia of Photo Brasswork,' 4d., and 'How to Make,' 2d., post free

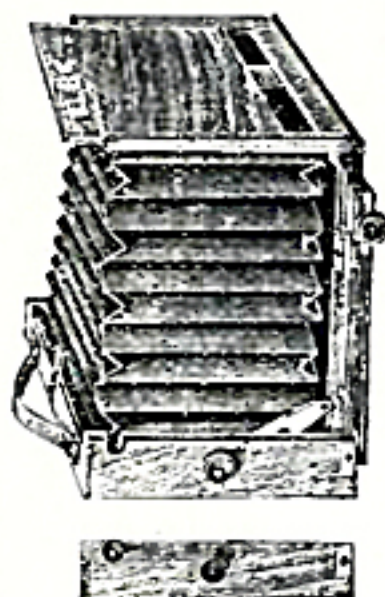
[See following pages,



THE 'PAGET.'



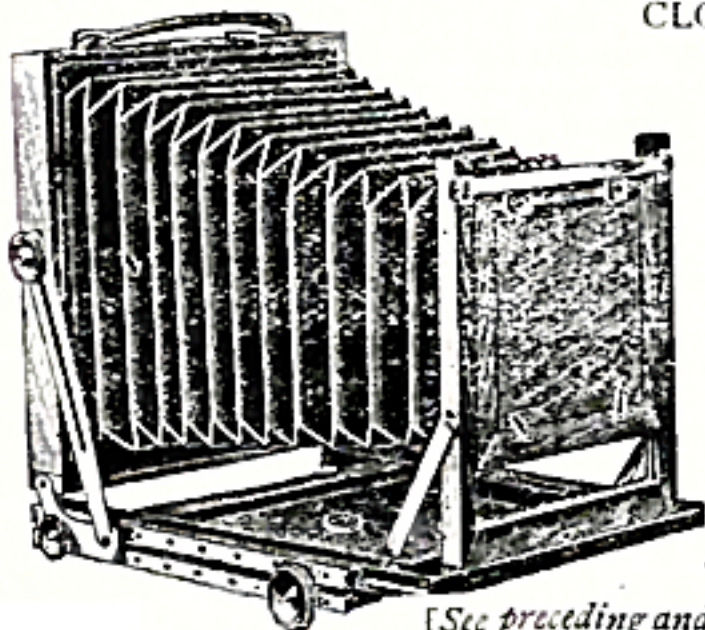
THE YORK.



CLOSED.

The 'POCKET STEREO' (6 $\frac{1}{2}$  by 3 $\frac{1}{4}$ ).

NEW



YORK.

[See preceding and following pages.]

# Lonsdale's Cameras are Practical Cameras.

## PRICE LIST OF CAMERAS, SLIDES, TRIPODS, &c,

	$\frac{1}{4}$ -plate.	$\frac{1}{2}$ -plate.	10x8	12x10	15x12
The 'PICCADILLY,' all movements, base-board cut out to allow for Thornton-Pickard Shutter, 1 book-form slide ... ..	45/-	65/-	...	...	...
Extra slides ... ..	9/-	13/6	...	...	...
The 'YORK,' as illustrated, and 1 book-form slide	52/6	75/-	100/-	130/-	165/-
The 'NEW YORK' is very compact, 1 book-form slide ... ..	60/-	82/6	...	...	...
The 'LANGTRY,' The ladies' camera, 32 oz., 1 book-form slide ... ..	70/-	92/6	...	...	...
The 'STANDARD,' as illustrated, and 1 book-form slide ... ..	85/-	110/-	142/6	172/6	215/-
EXTRA SLIDES, ivory numbers, automatic shutter catches ... ..	10/6	15/-	20/-	26/-	32/6
The 'PAGET,' Perfection in every respect. With turntable, 3-fold tripod, and 1 best slide ... ..	135/-	170/-	210/-	252/-	294/-
Extra slides, A quality, triple jointed shutters, rebated joints, hinged divisions ... ..	13/6	18/6	24/-	31/-	38/6
The 'YORK' STEREO, $\frac{1}{4}$ -plate and Stereoscopic combined, extra large front, removable division, slides cut out for $6\frac{1}{2} \times 3\frac{1}{2}$ . Compact camera ...	63/-			Extra slides, 11/-	
The 'POCKET' STEREO, with fixed division and 3 double slides, $6\frac{1}{2} \times 3\frac{1}{2}$ ... ..	57/6			Extra slides, 6/-	

### SPECIAL LINE.

## MAHOGANY SLIDES FOR LANCASTER CAMERAS, With Brass Catch Slots.

$\frac{1}{4}$ -plate, 4/9 .....  $\frac{1}{2}$ -plate, 7/6 .....  $\frac{1}{2}$ -plate, 11/6

The  $\frac{1}{2}$ -plate have hooks in place of hinge-clips.  
Fitted to other makes of cameras, 6d. per slide extra.  
Ivory Numbers, 3d. per slide extra.  
Automatic Shutter Catches, 9d. per slide extra.

## CARRIERS FOR SLIDES (Outside Sizes).

For 1 Plate— $\frac{1}{4}$ -plate, .7/9;  $\frac{1}{2}$ -plate, 1/-;  
10x8, 1/6; 12x10, 2/-; 15x12, 2/6 ca.  
For 2 Plates— $\frac{1}{4}$ -plate, 1/-;  $\frac{1}{2}$ -plate, 1/3;  
10x8, 1/9; 12x10, 2/6;  
15x12, 3/- each.

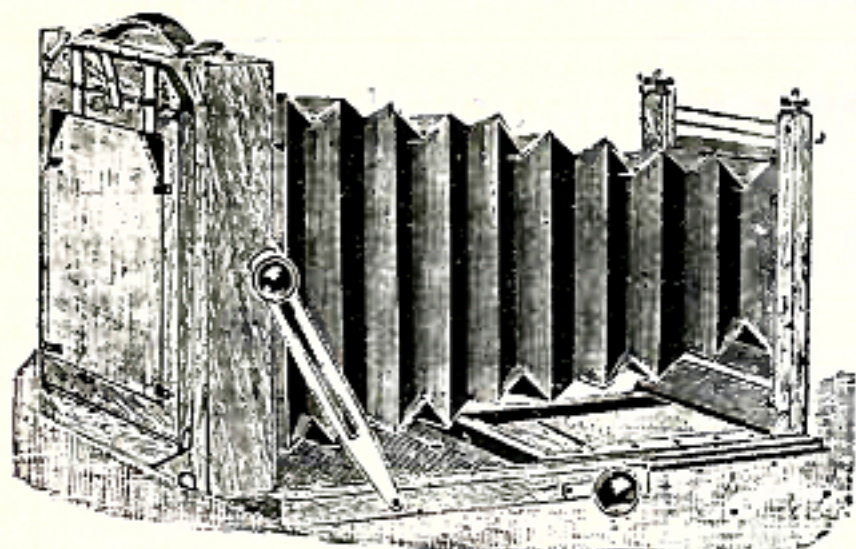


**N.B.—Lonsdale's Cameras are Practical Cameras.**

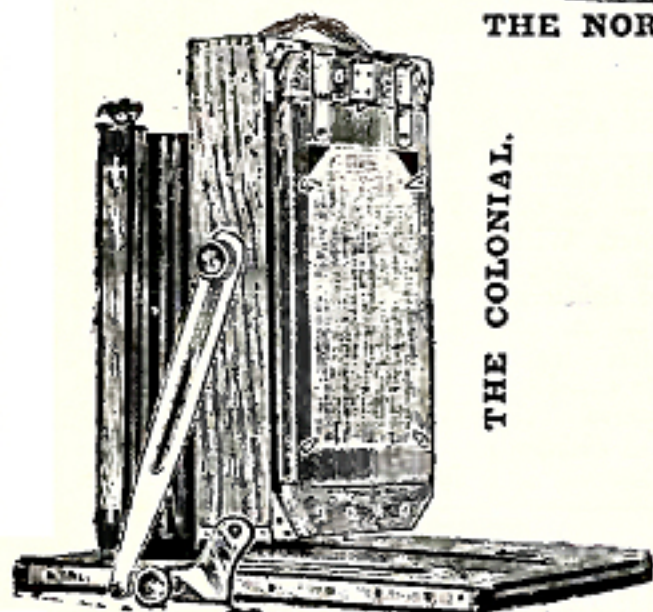
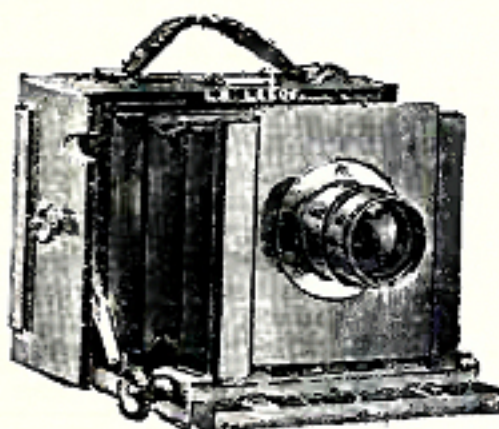
[See preceding and following pages.]

**CAMERA COMPONENTS.**

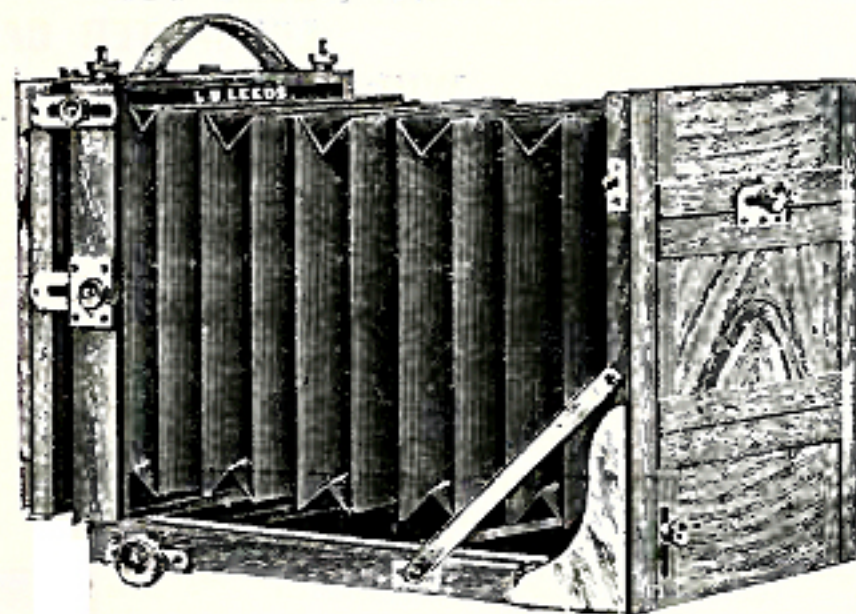
PRACTICAL.



PRACTICAL.

**THE NORTHERN.****THE COLONIAL.****THE SUNSET.**

PRACTICAL.



PRACTICAL.

**THE STANDARD.**

N.B.—LONSDALE'S CAMERAS ARE PRACTICAL CAMERAS.  
 22 GOSWELL RD., LONDON, E.C., near Aldersgate St. Station.

[See preceding and following pages.]

# CAMERA COMPONENTS.

**C**AMERAS, &c., in all stages of finish, suitable for export, and specially adapted for dealers desiring to **MANUFACTURE ON THE PREMISES.** The spare hours of the 'handy-man' can be utilised in finishing and fitting-up. No special knowledge required. The woodwork is of selected mahogany; designed, shaped, and glued-up; every process requiring machinery and power being already done. Everything modern and up to date.

	1-plate.	1/2 plate.	1-plate.	10x8	12x10	15x12
<b>No. 1.—'NORTHERN' CAMERA,</b> 1 double slide, and brass fittings, unfinished ... ..	19/9	22/9	28/-	38/-	48/6	61/6
Finishing brasswork, extra ... ..	2/3	2/9	3/3	3/9	4/-	4/6
Finishing woodwork ready for polishing, extra ... ..	5/9	7/-	10/9	15/9	21/6	31/6
<b>No. 2.—'YORK' CAMERA,</b> 1 double slide, and brass fittings, unfinished ...	22/6	26/-	34/6	47/6	61/6	76/6
Finishing brasswork, extra ... ..	2/9	3/3	3/9	4/6	5/-	5/6
Finishing woodwork ready for polishing, extra ... ..	6/9	8/3	12/-	17/-	24/-	32/-
<b>No. 3.—'NEW YORK' CAMERA,</b> and 1 double slide, and brass fittings, unfinished ... ..	24/-	29/-	37/6	...	...	...
Finishing brasswork, extra ... ..	3/3	3/9	4/3	...	...	...
Finishing woodwork, extra ... ..	7/-	9/9	14/-	...	...	...
<b>No. 4.—'COLONIAL' CAMERA,</b> 1 double slide, and brass fittings, unfinished ... ..	27/-	34/6	45/6	58/-	74/-	90/6
Finishing brasswork, extra ... ..	3/6	4/-	4/6	5/-	5/9	6/6
Finishing woodwork, extra ... ..	8/6	12/6	16/6	20/6	26/6	35/-
<b>No. 5.—'STANDARD' CAMERA,</b> 1 slide, and brass fittings, unfinished ...	35/6	45/-	57/6	74/-	100/6	113/6
Finishing fittings, extra ... ..	3/6	3/9	4/-	4/6	4/9	5/-
Finishing woodwork, extra ... ..	14/6	17/-	20/-	25/-	29/-	36/6
Extra Slides, book-form, in parts, unfinished	3/3	4/-	5/6	7/-	8/6	11/-
Ditto, A quality, triple joints, rebated, unfinished ... ..	4/-	5/-	6/9	8/9	10/6	13/6
Extra Slides, finished, ready for polishing	5/6	8/3	12/6	...	...	...
Ditto, ditto, better quality, auto springs, &c.	7/-	9/9	11/-	18/9	21/6	30/6
Ditto, ditto, best A quality, ditto ... ..	9/6	12/9	17/6	22/9	28/6	36/6
Cloth Bellows for 'Northern,' 'York,' and 'Colonial' patterns ... ..	2/6	4/-	6/9	9/-	14/-	18/-
Leather Bellows, best quality ... ..	3/6	6/-	10/-	14/6	19/-	25/-
Ditto, ditto, for 'Standard' ... ..	3/9	7/-	11/6	16/6	21/-	27/6
Ditto, ditto, for 'New York,' truncated corners, very compact ... ..	4/6	7/6	13/6	...	...	...

**THE 'SUNSET' POCKET CAMERA** and 3 double slides, in parts, with bellows, and all fittings, unfinished, 20/-.

**LONSDALE'S CAMERAS ARE 'PRACTICAL' CAMERAS.**

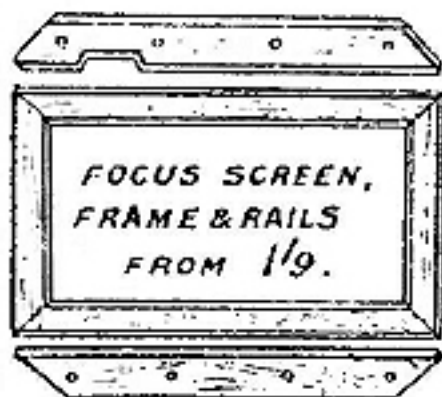
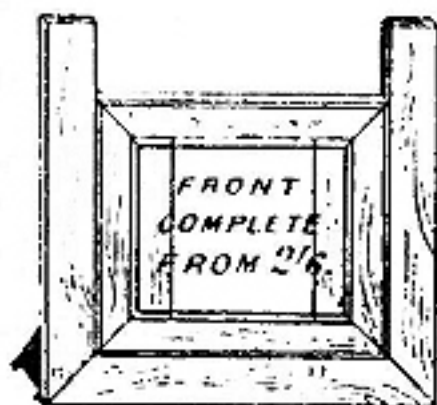
SEE NEXT AND PRECEDING PAGES FOR ILLUSTRATIONS.

[See preceding and following pages.]

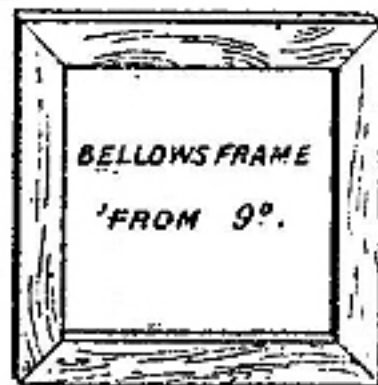
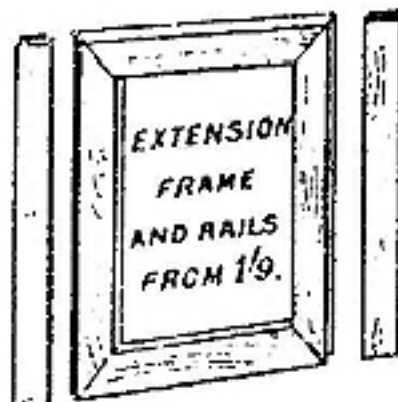
## CAMERA COMPONENTS-SEASONED MAHOGANY

GLUED UP AND MACHINED  
(50 PAGES) (COMPLETE LISTS)FOR AMATEUR FINISHING.  
POST FREE 2/6 (500 ILLUSTRATIONS)

COMPLETE SETS WOODWORK &amp; FITTINGS. 4 PL or 3 1/2. 3 1/4 POCKET CAMERA &amp; 3 DOUBLE SLIDES 20/6.



COMPLETE SETS WOODWORK & PL 10/6. 1/2 PL 13/6. 1/2 PL 17/- BRASS FITTINGS. 8/3. 10/12. SET BELLOWS LEATHER... 3/5 6/10. EA CLOTH... 2/6 4/6. 6/9 EA  
TO BE HAD OF ALL DEALERS THROUGHOUT THE WORLD.



COMPLETE SETS, MITRED DOUBLE GROOVING WITH HINGED SHUTTERS & ALL FITTINGS  
FOR BOOK FORM SLIDES. 4 PL. 3/3. 1/2 PL. 4/4. 1 PL. 5/6.

LONSDALE BROS. 22 GOSWELL ROAD, LONDON. E.C.

LONSDALE BROS., 22 Goswell Road, London, E.C.

**CAMERA FITTINGS**

1. 2/6  
 2. 1/1. PR INCH  
 3. 1/1. PR INCH  
 8. 1/1. PR INCH  
 60. 1/6. FOOT  
 47. 1/3. PR  
 16. 1/6.  
 23. 1/3  
 35. 1/4.  
 189. 1/3. PR  
 10. 1/2  
 124. 1/3  
 21. 3/-  
 38. 1/3.  
 97. 1/2  
 65. 1/2. PR  
 159. 1/1. PR  
 48. 1/2. PR  
 110. 1/7 SET  
 83. 1/4. PR

**LB. LEADS**

4. 1/4  
 35. 1/7. PR  
 89. 1/10. PR  
 94. 1/6. FOOT  
 199. 1/-  
 198. 1/3  
 208. 1/2. PR  
 114. 1/12  
 113. 1/1  
 207. 1/2  
 71. 1/1. PR  
 123. 1/6  
 136. 1/12  
 140. 1/12  
 144. 1/12  
 128. 1/6. PR  
 126. 1/2. PR  
 363. 1/3. PR

**HAND CAMERA FITTINGS**

379. 2/- SET  
 380. 2/6 SET  
 381. 2/6 SET  
 378. 2/6  
 377. 1/6.  
 383. 1/3  
 SHEATH

**TRIPOD FITTINGS**

372. 1/6  
 188. 1/1.  
 191. 1/12.  
 189. 1/12  
 193. 1/2  
 182. 1/2  
 377. 1/2  
 210  
 1/10. SET

**WOOD GROOVING**

203. 1/6. FT  
 413. 1/1 SET  
 202. 1/6  
 414. 1/6.  
 413  
 1/11 SET

**LANTERN FITTINGS**

385. 4/6.  
 387. 5/-  
 392. 1/-  
 393. 2/-  
 1/-  
 399. 1/-  
 404  
 403. 1/3

LONSDALE BROS., 22 Goswell Road, London, E.C.

[See preceding and following pages]